

MECPROM

**ÜRÜN
KATALOĞU**

PRODUCT CATALOG

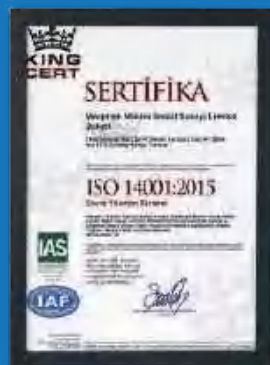
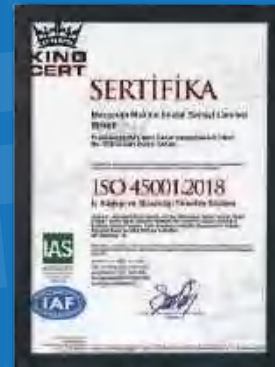
CHOICE FOR STRENGTH



MECPROM

MECPR0M

ADDRESS OF QUALITY



MECPR0M



INDEX

MP360 ES9+E6	1-2
MP330 EL8+E6	3-4
MP240 EL7+E5	5-6
MP225 EL7+E5	7-8
MP165 EL7+E5	9-10
MP110 EL6+E5 AD	11-12
MP110 EL6+E5	13-14
MP95 ES6+E4	15-16
MP75 ES6	17-18
MP60 ES6	19-20
MP45 ES6	21-22
MP30 ES6	23-24
MP24 FS3	25-26



ARAÇ ÜSTÜ
KATLANIR BOMLU VİNÇ

TRUCK MOUNTED KNUCKLE BOOM CRANES



VİNÇ TEKNİK ÖZELLİKLERİ CRANE TECHNICAL SPECIFICATIONS

MAX MOMENT CAPACITY MAKSİMUM MOMENT KAPASİTESİ	360 TM
MAX LIFTING CAPACITY MAKSİMUM YÜK KAPASİTESİ	71700 kg
MAXIMUM VERTICAL HYDRAULIC EXTENSION MAKSİMUM DİKEY HİDROLİK UZANMA	28.5 m
MAXIMUM VERTICAL MANUAL EXTENSION MAKSİMUM DİKEY MEKANİK UZANMA	33.5 m
MAXIMUM VERTICAL HYDRAULIC EXTENSION WITH FLY JIB 2. KIRMA DAHİL MAKSİMUM DİKEY HİDROLİK UZANMA	47.25
MAXIMUM VERTICAL MANUAL EXTENSION WITH FLY JIB 2. KIRMA DAHİL MAKSİMUM DİKEY MEKANİK UZANMA	53.29
MAX. WORKING PRESSURE MAKS. ÇALIŞMA BASINCI	350 Bar
ROTATION ANGLE DÖNÜŞ AÇISI	∞
NUMBER OF THE HYDRAULIC EXTENSION HİDROLİK UZATMA SAYISI	9
NUMBER OF THE HYDRAULIC EXTENSION ON FLY JIB HİDROLİK BOM SAYISI 2. KIRMA	6
COUNTERWEIGHT DENGE AĞIRLIK	15700 kg
PUMP CAPACITY (cc) (lt/min) POMPA KAPASİTESİ (cc) (lt/dk)	DEPEND ON THE PTO ARAÇ PTO ÇIKIŞINA GÖRE
OIL TANK CAPACITY YAĞ TANKI KAPASİTESİ	800 lt
SLEWING RING DIAMETER ÇEMBER DİŞLİ ÇAPI	Ø2147mm - İÇTEN DİŞLİ / INTERNAL GEAR
WINCH MAX. SINGLE LINE PULL 4./1. ROPE LAYER HALAT TAMBUR MAK. TEK TEL KAPASİTE 4./1. SARIM	4500 / 5750 kg
BOOM SECTION TYPE BOM KEŞİT YAPISI	1.KIRMA ONBİRGEN / HENDECAGON 2.KIRMA ALTİGEN / HEXAGONAL
SLEWING GEAR REDÜKTÖR	ÇİFT / DOUBLE
DEAD WEIGHT ÜST YAPI AĞIRLIK	59590 kg

STANDART ÖZELLİKLER STANDARD FEATURES

HALAT TAMBUR HOSTING WINCH	HAREKETLİ DENGE AĞIRLIĞI EXTENDABLE COUNTERWEIGHT	OPERATÖR KABİNİ OPERATOR CABIN
OTOMATİK YAĞLAMA AUTOMATIC LUBRICATION	MOMENT KONTROL SİSTEMİ MOMENT CONTROL SYSTEM	OPERATÖR KABİNİ ISITMASI OPERATOR CABIN HEATING
ORANSAL KUMANDA PROPORTIONAL CONTROL VALVE	JOYSTICK KUMANDA JOYSTICK CONTROLLER	RADYO KONTROL RADIO CONTROL
KANTAR SİSTEMİ LOAD MEASURING SYSTEM	DEĞİŞKEN DEPLASMANLI POMPA VARIABLE DISPLACEMENT PUMP	AYAK KONTROL SİSTEMİ STABILIZERS CONTROL SYSTEM

OPSİYONEL ÖZELLİKLER OPTIONAL FEATURES

ÇİFT KOLDAN UZATMA DOUBLE ARM EXTENSION	OPERATÖR KABİNİ KLİMASI OPERATOR CABIN A/C

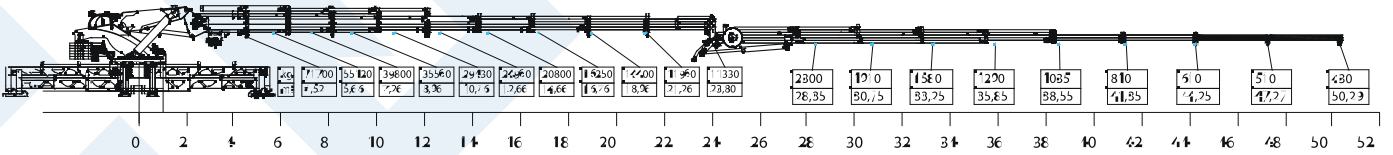
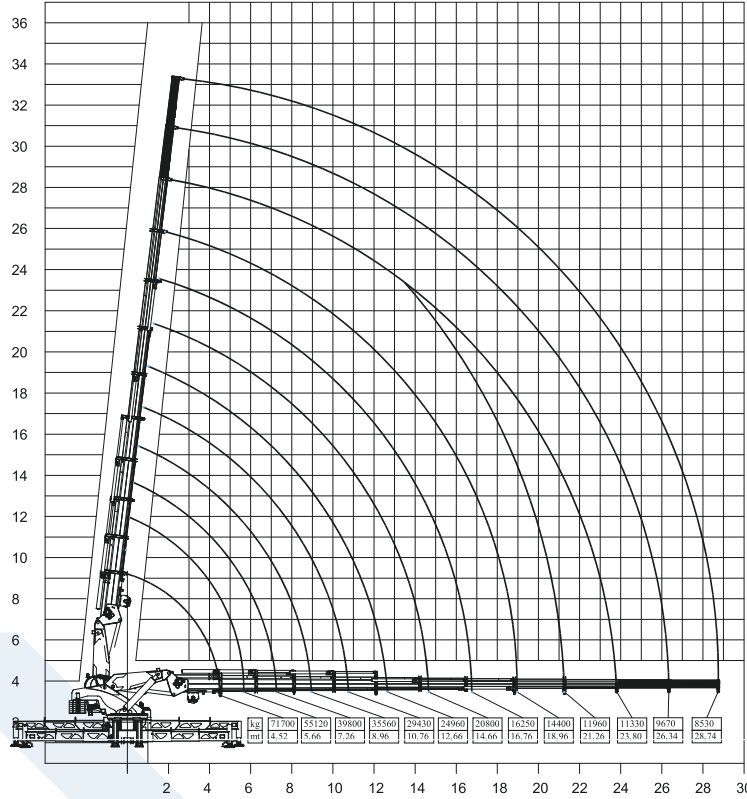




MP 360 ES9+E6

ARAÇ ÜSTÜ KATLANIR BOMLU VİNÇLER TRUCK MOUNTED KNUCKLE BOOM CRANES

MP 360 ES9+E6 ÇALIŞMA DİYAGRAMI MP360 ES9+E6 LIFTING CAPACITY



* UZANMA MESAFELERİNDE BOM SEHİMLERİ DİKKATE ALINMAMIŞTIR.
* BOOM DEFLECTIONS ARE NOT CONSIDERED AT BOOM DISTANCES.



MECPROM



VİNÇ TEKNİK ÖZELLİKLERİ CRANE TECHNICAL SPECIFICATIONS

MAX MOMENT CAPACITY MAKSİMUM MOMENT KAPASİTESİ	330 TM
MAX LIFTING CAPACITY MAKSİMUM YÜK KAPASİTESİ	55100 kg
MAXIMUM VERTICAL HYDRAULIC EXTENSION MAKSİMUM DİKEY HİDROLİK UZANMA	29.3 m
MAXIMUM VERTICAL MANUAL EXTENSION MAKSİMUM DİKEY MEKANİK UZANMA	35 m
MAXIMUM VERTICAL HYDRAULIC EXTENSION WITH FLY JIB 2. KIRMA DAHİL MAKSİMUM DİKEY HİDROLİK UZANMA	48.6
MAXIMUM VERTICAL MANUAL EXTENSION WITH FLY JIB 2. KIRMA DAHİL MAKSİMUM DİKEY MEKANİK UZANMA	54.9
MAX. WORKING PRESSURE MAKS. ÇALIŞMA BASINCI	350 Bar
ROTATION ANGLE DÖNÜŞ AÇISI	∞
NUMBER OF THE HYDRAULIC EXTENSION HİDROLİK UZATMA SAYISI	8
NUMBER OF THE HYDRAULIC EXTENSION ON FLY JIB HİDROLİK BOM SAYISI 2. KIRMA	6
COUNTERWEIGHT DENGE AĞIRLIK	10300 kg
PUMP CAPACITY (cc) (lt/min) POMPA KAPASİTESİ (cc) (lt/dk)	DEPEND ON THE PTO ARAÇ PTO ÇIKIŞINA GÖRE
OIL TANK CAPACITY YAĞ TANKI KAPASİTESİ	790 lt
SLEWING RING DIAMETER ÇEMBER DİŞLİ ÇAPI	Ø1947mm - İÇTEN DİŞLİ / INTERNAL GEAR
WINCH MAX. SINGLE LINE PULL 4./1. ROPE LAYER HALAT TAMBUR MAK. TEK TEL KAPASİTE 4./1. SARIM	4500 / 5750 kg
BOOM SECTION TYPE BOM KESİT YAPISI	1.KIRMA ONBİRGEN / HENDECAGON 2.KIRMA ALTİGEN / HEXAGONAL
SLEWING GEAR REDÜKTÖR	ÇİFT / DOUBLE
DEAD WEIGHT ÜST YAPI AĞIRLIK	49665 kg

STANDART ÖZELLİKLER STANDARD FEATURES

HALAT TAMBUR HOSTING WINCH	HAREKETLİ DENGE AĞIRLIĞI EXTENDABLE COUNTERWEIGHT	OPERATÖR KABINI OPERATOR CABIN
OTOMATİK YAĞLAMA AUTOMATIC LUBRICATION	MOMENT KONTROL SİSTEMİ MOMENT CONTROL SYSTEM	OPERATÖR KABIN ISITMASI OPERATOR CABIN HEATING
ORANSAL KUMANDA PROPORTIONAL CONTROL VALVE	JOYSTICK KUMANDA JOYSTICK CONTROLLER	RADYO KONTROL RADIO CONTROL
KANTAR SİSTEMİ LOAD MEASURING SYSTEM	DEĞİŞKEN DEPLASMANLI POMPA VARIABLE DISPLACEMENT PUMP	AYAK KONTROL SİSTEMİ STABILIZERS CONTROL SYSTEM

OPSİYONEL ÖZELLİKLER OPTIONAL FEATURES

ÇİFT KOLDAN UZATMA DOUBLE ARM EXTENSION	OPERATÖR KABIN KLİMASI OPERATOR CABIN A/C

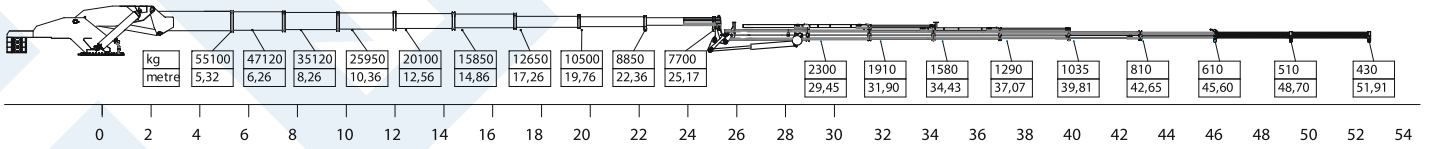
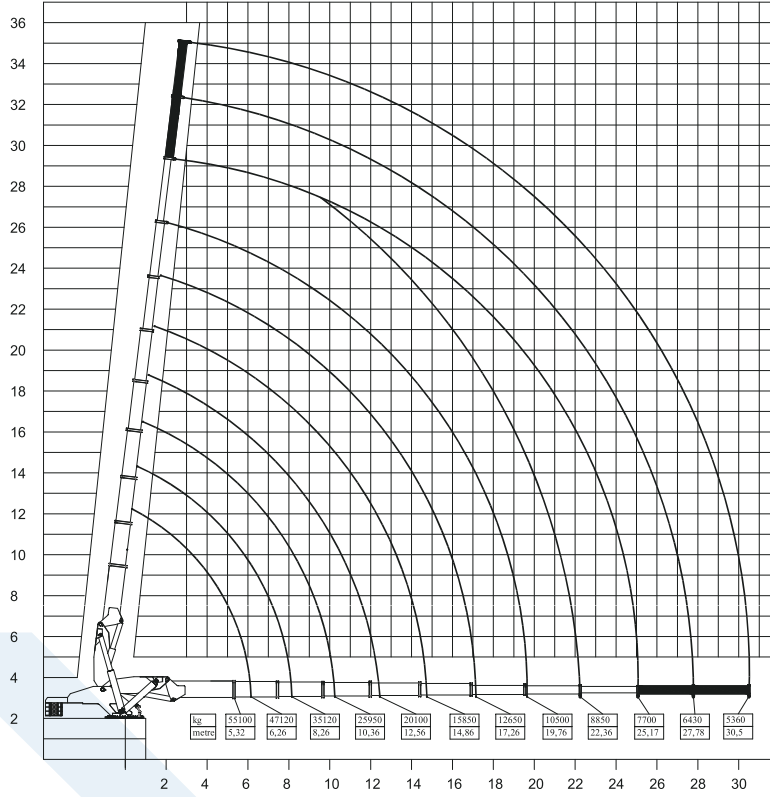




MP 330 EL8+E6

ARAÇ ÜSTÜ KATLANIR BOMLU VİNÇLER TRUCK MOUNTED KNUCKLE BOOM CRANES

MP 330 EL8+E6 ÇALIŞMA DİYAGRAMI MP 330 EL8+E6 LIFTING CAPACITY



* UZANMA MESAFELERİNDE BOM SEHİMLERİ DİKKATE ALINMAMIŞTIR.
* BOOM DEFLECTIONS ARE NOT CONSIDERED AT BOOM DISTANCES.





VİNÇ TEKNİK ÖZELLİKLERİ CRANE TECHNICAL SPECIFICATIONS

MAX MOMENT CAPACITY MAKSİMUM MOMENT KAPASİTESİ	240 TM
MAX LIFTING CAPACITY MAKSİMUM YÜK KAPASİTESİ	44400 kg
MAXIMUM VERTICAL HYDRAULIC EXTENSION MAKSİMUM DİKEY HİDROLİK UZANMA	26.5 m
MAXIMUM VERTICAL MANUAL EXTENSION MAKSİMUM DİKEY MEKANİK UZANMA	31.8 m
MAXIMUM VERTICAL HYDRAULIC EXTENSION WITH FLY JIB 2. KIRMA DAHİL MAKSİMUM DİKEY HİDROLİK UZANMA	45.46
MAXIMUM VERTICAL MANUAL EXTENSION WITH FLY JIB 2. KIRMA DAHİL MAKSİMUM DİKEY MEKANİK UZANMA	51.9
MAX. WORKING PRESSURE MAKS. ÇALIŞMA BASINCI	300 Bar
ROTATION ANGLE DÖNÜŞ AÇISI	∞
NUMBER OF THE HYDRAULIC EXTENSION HİDROLİK UZATMA SAYISI	7
NUMBER OF THE HYDRAULIC EXTENSION ON FLY JIB HİDROLİK BOM SAYISI 2. KIRMA	6
COUNTERWEIGHT DENGE AĞIRLIK	7700 kg
PUMP CAPACITY (cc) (lt/min) POMPA KAPASİTESİ (cc) (lt/dk)	DEPEND ON THE PTO ARAÇ PTO ÇIKIŞINA GÖRE
OIL TANK CAPACITY YAĞ TANKI KAPASİTESİ	650 lt
SLEWING RING DIAMETER ÇEMBER DİŞLİ ÇAPI	Ø1750mm - İÇTEN DİŞLİ / INTERNAL GEAR
WINCH MAX. SINGLE LINE PULL 4./1. ROPE LAYER HALAT TAMBUR MAK. TEK TEL KAPASİTE 4./1. SARIM	3500 / 4500 kg
BOOM SECTION TYPE BOM KESİT YAPISI	1.KIRMA ONGEN / DECAGONAL 2.KIRMA ALTIGEN / HEXAGONAL
SLEWING GEAR REDÜKTÖR	ÇİFT / DOUBLE
DEAD WEIGHT ÜST YAPI AĞIRLIK	44520 kg

STANDART ÖZELLİKLER STANDARD FEATURES

HALAT TAMBUR HOSTING WINCH 	HAREKETLİ DENGE AĞIRLIĞI EXTENDABLE COUNTERWEIGHT 	OPERATÖR KABINI OPERATOR CABIN
OTOMATİK YAĞLAMA AUTOMATIC LUBRICATION 	MOMENT KONTROL SİSTEMİ MOMENT CONTROL SYSTEM 	OPERATÖR KABIN ISITMASI OPERATOR CABIN HEATING
ORANSAL KUMANDA PROPORTIONAL CONTROL VALVE 	JOYSTICK KUMANDA SİSTEMİ JOYSTICK CONTROLLER 	RADYO KONTROL RADIO CONTROL
KANTAR SİSTEMİ LOAD MEASURING SYSTEM 	DEĞİŞKEN DEPLASMANLI POMPA VARIABLE DISPLACEMENT PUMP 	AYAK KONTROL SİSTEMİ STABILIZERS CONTROL SYSTEM

OPSİYONEL ÖZELLİKLER OPTIONAL FEATURES

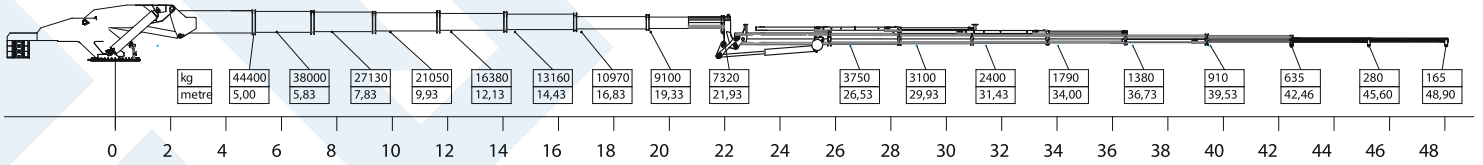
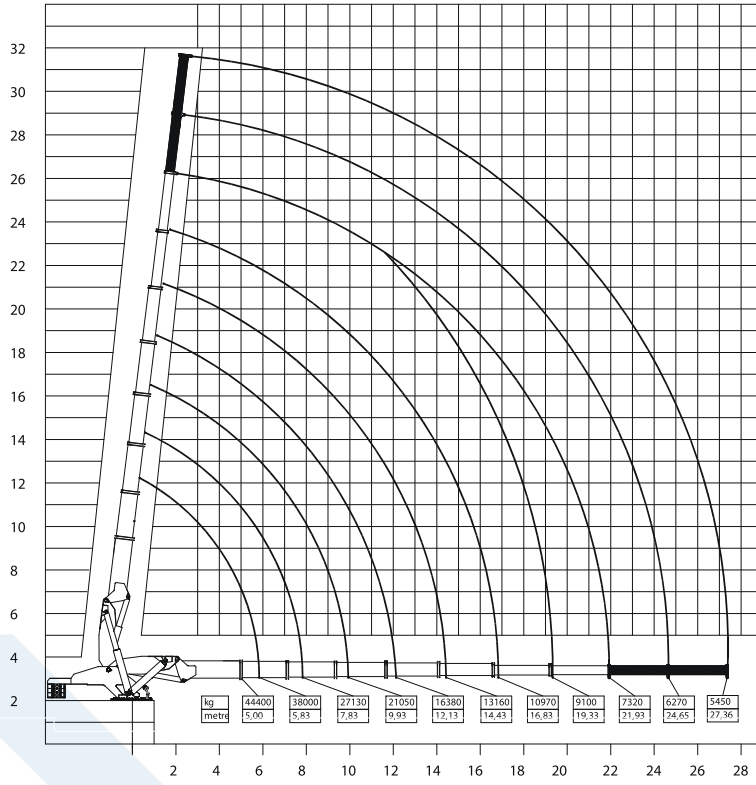
ÇİFT KOLDAN UZATMA DOUBLE ARM EXTENSION 	OPERATÖR KABIN KLİMASI OPERATOR CABIN A/C
--	--



MP 240 EL7+E6

ARAÇ ÜSTÜ KATLANIR BOMLU VİNÇLER TRUCK MOUNTED KNUCKLE BOOM CRANES

MP 240 EL7+E6 ÇALIŞMA DİYAGRAMI MP240 EL7+E6 LIFTING CAPACITY



* UZANMA MESAFELERİNDE BOM SEHİMLERİ DİKKATE ALINMAMIŞTIR.
* BOOM DEFLECTIONS ARE NOT CONSIDERED AT BOOM DISTANCES.





VİNÇ TEKNİK ÖZELLİKLERİ CRANE TECHNICAL SPECIFICATIONS

MAX MOMENT CAPACITY MAKSİMUM MOMENT KAPASİTESİ	225 TM
MAX LIFTING CAPACITY MAKSİMUM YÜK KAPASİTESİ	41900 kg
MAXIMUM VERTICAL HYDRAULIC EXTENSION MAKSİMUM DİKEY HİDROLİK UZANMA	26.5 m
MAXIMUM VERTICAL MANUAL EXTENSION MAKSİMUM DİKEY MEKANİK UZANMA	31.8 m
MAXIMUM VERTICAL HYDRAULIC EXTENSION WITH FLY JIB 2. KIRMA DAHİL MAKSİMUM DİKEY HİDROLİK UZANMA	42.4
MAXIMUM VERTICAL MANUAL EXTENSION WITH FLY JIB 2. KIRMA DAHİL MAKSİMUM DİKEY MEKANİK UZANMA	48.5
MAX. WORKING PRESSURE MAKS. ÇALIŞMA BASINCI	300 Bar
ROTATION ANGLE DÖNÜŞ AÇISI	∞
NUMBER OF THE HYDRAULIC EXTENSION HİDROLİK UZATMA SAYISI	7
NUMBER OF THE HYDRAULIC EXTENSION ON FLY JIB HİDROLİK BOM SAYISI 2. KIRMA	5
COUNTERWEIGHT DENGE AĞIRLIK	7700 kg
PUMP CAPACITY (cc) (lt/min) POMPA KAPASİTESİ (cc) (lt/dk)	DEPEND ON THE PTO ARAÇ PTO ÇIKIŞINA GÖRE
OIL TANK CAPACITY YAĞ TANKI KAPASİTESİ	635 lt
SLEWING RING DIAMETER ÇEMBER DİŞLİ ÇAPI	Ø1750mm - İÇTEN DİŞLİ / INTERNAL GEAR
WINCH MAX. SINGLE LINE PULL 4./1. ROPE LAYER HALAT TAMBUR MAK. TEK TEL KAPASİTE 4./1. SARIM	3500 / 4500 kg
BOOM SECTION TYPE BOM KEŞİT YAPISI	1.KIRMA ONGEN / DECAGONAL 2.KIRMA ALTIGEN / HEXAGONAL
SLEWING GEAR REDÜKTÖR	ÇİFT / DOUBLE
DEAD WEIGHT ÜST YAPI AĞIRLIK	41870 kg

STANDART ÖZELLİKLER STANDARD FEATURES

HALAT TAMBUR HOSTING WINCH 	HAREKETLİ DENGE AĞIRLIĞI EXTENDABLE COUNTERWEIGHT 	OPERATÖR KABINI OPERATOR CABIN
OTOMATİK YAĞLAMA AUTOMATIC LUBRICATION 	MOMENT KONTROL SİSTEMİ MOMENT CONTROL SYSTEM 	OPERATÖR KABIN ISITMASI OPERATOR CABIN HEATING
ORANSAL KUMANDA PROPORTIONAL CONTROL VALVE 	JOYSTICK KUMANDA SİSTEMİ JOYSTICK CONTROLLER 	RADYO KONTROL RADIO CONTROL
KANTAR SİSTEMİ LOAD MEASURING SYSTEM 	DEĞİŞKEN DEPLASMANLI POMPA VARIABLE DISPLACEMENT PUMP 	AYAK KONTROL SİSTEMİ STABILIZERS CONTROL SYSTEM

OPSİYONEL ÖZELLİKLER OPTIONAL FEATURES

ÇİFT KOLDAN UZATMA DOUBLE ARM EXTENSION 	OPERATÖR KABIN KLİMASI OPERATOR CABIN A/C
--	--

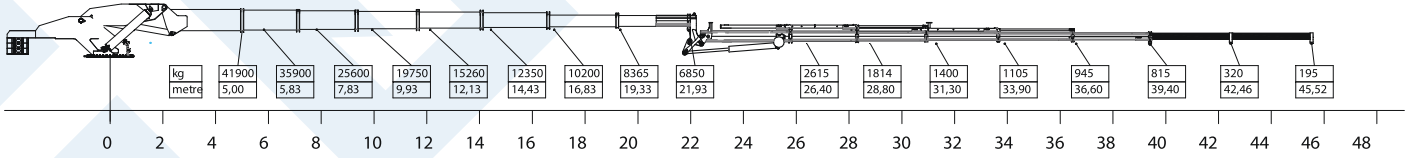
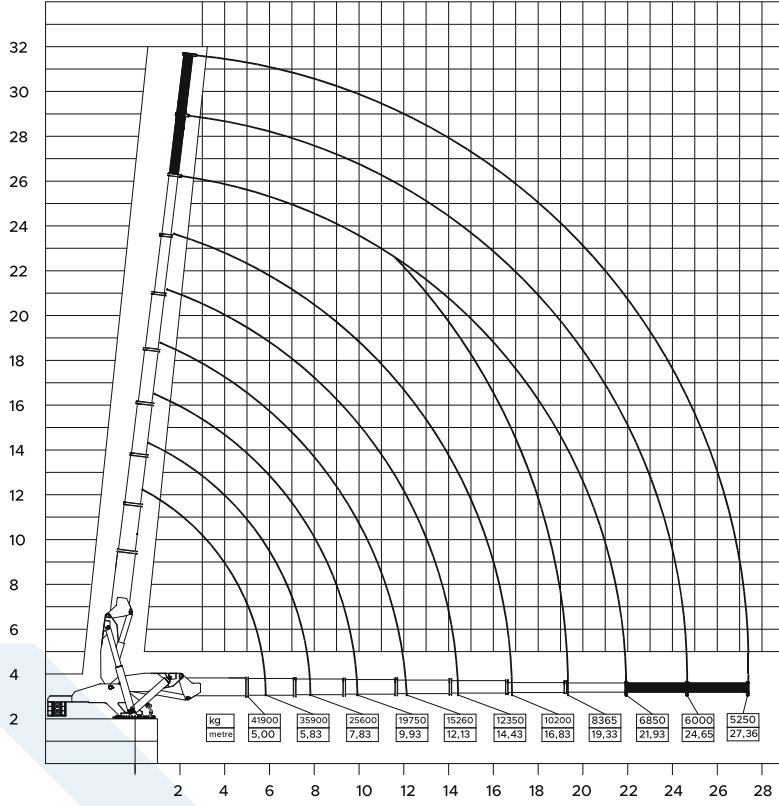




MP 225 EL7+E5

ARAÇ ÜSTÜ KATLANIR BOMLU VİNÇLER TRUCK MOUNTED KNUCKLE BOOM CRANES

MP 225 EL7+E5 ÇALIŞMA DİYAGRAMI MP 225 EL7+E5 LIFTING CAPACITY



* UZANMA MESAFELERİNDE BOM SEHİMLERİ DİKKATE ALINMAMIŞTIR.
* BOOM DEFLECTIONS ARE NOT CONSIDERED AT BOOM DISTANCES.



MECPROM



VİNÇ TEKNİK ÖZELLİKLERİ CRANE TECHNICAL SPECIFICATIONS

MAX MOMENT CAPACITY MAKSİMUM MOMENT KAPASİTESİ	165 TM
MAX LIFTING CAPACITY MAKSİMUM YÜK KAPASİTESİ	34530 kg
MAXIMUM VERTICAL HYDRAULIC EXTENSION MAKSİMUM DİKEY HİDROLİK UZANMA	26.5 m
MAXIMUM VERTICAL MANUAL EXTENSION MAKSİMUM DİKEY MEKANİK UZANMA	31.5 m
MAXIMUM VERTICAL HYDRAULIC EXTENSION WITH FLY JIB 2. KIRMA DAHİL MAKSİMUM DİKEY HİDROLİK UZANMA	41.05
MAXIMUM VERTICAL MANUAL EXTENSION WITH FLY JIB 2. KIRMA DAHİL MAKSİMUM DİKEY MEKANİK UZANMA	46.62
MAX. WORKING PRESSURE MAKS. ÇALIŞMA BASINCI	300 Bar
ROTATION ANGLE DÖNÜŞ AÇISI	∞
NUMBER OF THE HYDRAULIC EXTENSION HİDROLİK UZATMA SAYISI	7
NUMBER OF THE HYDRAULIC EXTENSION ON FLY JIB HİDROLİK BOM SAYISI 2. KIRMA	5
COUNTERWEIGHT DENGE AĞIRLIK	4900 kg
PUMP CAPACITY (cc) (lt/min) POMPA KAPASİTESİ (cc) (lt/dk)	DEPEND ON THE PTO ARAÇ PTO ÇIKIŞINA GÖRE
OIL TANK CAPACITY YAĞ TANKI KAPASİTESİ	530 lt
SLEWING RING DIAMETER ÇEMBER DİŞLİ ÇAPI	Ø1600mm - İÇTEN DİŞLİ / INTERNAL GEAR
WINCH MAX. SINGLE LINE PULL 4./1. ROPE LAYER HALAT TAMBUR MAK. TEK TEL KAPASİTE 4./1. SARIM	2750 / 3550 kg
BOOM SECTION TYPE BOM KEŞİT YAPISI	1.KIRMA SEKİZGEN / OCTAGONAL 2.KIRMA ALTIGEN / HEXAGONAL
SLEWING GEAR REDÜKTÖR	ÇİFT / DOUBLE
DEAD WEIGHT ÜST YAPI AĞIRLIK	32760 kg

STANDART ÖZELLİKLER STANDARD FEATURES

HALAT TAMBUR HOSTING WINCH	OTOMATİK YAĞLAMA AUTOMATIC LUBRICATION	OPERATÖR KABINI OPERATOR CABIN
RADYO KONTROL RADIO CONTROL	MOMENT KONTROL SİSTEMİ MOMENT CONTROL SYSTEM	OPERATÖR KABINI ISITMASI OPERATOR CABIN HEATING
ORANSAL KUMANDA SİSTEMİ PROPORTIONAL CONTROL VALVE	AYAK KONTROL SİSTEMİ STABILIZERS CONTROL SYSTEM	

OPSİYONEL ÖZELLİKLER OPTIONAL FEATURES

ÇİFT KOLDAN UZATMA DOUBLE ARM EXTENSION	DEĞİŞKEN DEPLASMANLI POMPA VARIABLE DISPLACEMENT PUMP	OPERATÖR KABINI KLİMASI OPERATOR CABIN A/C
KANTAR SİSTEMİ LOAD MEASURING SYSTEM	JOYSTICK KUMANDA JOYSTICK CONTROLLER	

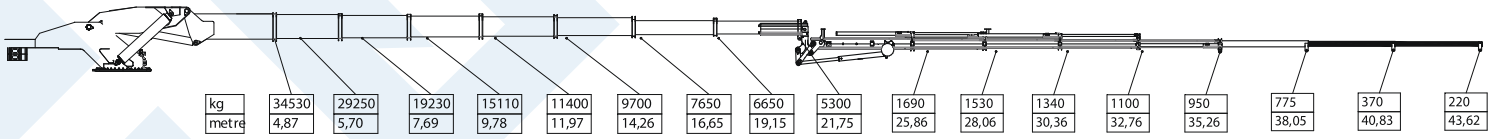
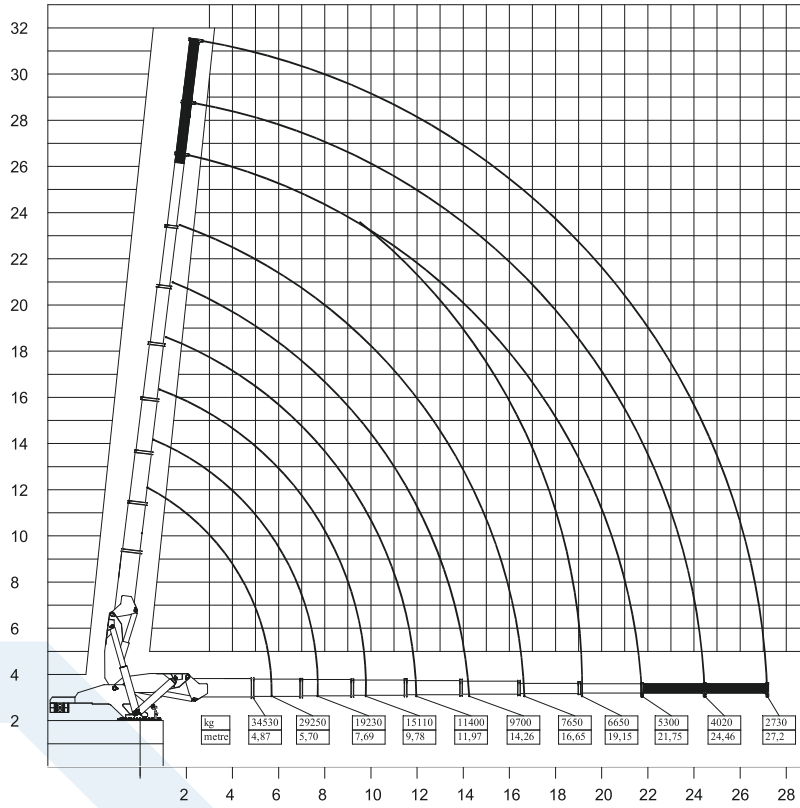




MP 165 EL7+E5

ARAÇ ÜSTÜ KATLANIR BOMLU VİNÇLER TRUCK MOUNTED KNUCKLE BOOM CRANES

MP165 EL7+E5 ÇALIŞMA DİYAGRAMI MP165 EL7+E LIFTING CAPACITY



* UZANMA MESAFELERİNDE BOM SEHİMLERİ DİKKATE ALINMAMIŞTIR.
* BOOM DEFLECTIONS ARE NOT CONSIDERED AT BOOM DISTANCES.



MECPROM



VİNÇ TEKNİK ÖZELLİKLERİ CRANE TECHNICAL SPECIFICATIONS

MAX MOMENT CAPACITY MAKSİMUM MOMENT KAPASİTESİ	110 TM
MAX LIFTING CAPACITY MAKSİMUM YÜK KAPASİTESİ	25100 kg
MAXIMUM VERTICAL HYDRAULIC EXTENSION MAKSİMUM DİKEY HİDROLİK UZANMA	22 m
MAXIMUM VERTICAL MANUAL EXTENSION MAKSİMUM DİKEY MEKANİK UZANMA	26.8 m
MAXIMUM VERTICAL HYDRAULIC EXTENSION WITH FLY JIB 2. KIRMA DAHİL MAKSİMUM DİKEY HİDROLİK UZANMA	37.7
MAXIMUM VERTICAL MANUAL EXTENSION WITH FLY JIB 2. KIRMA DAHİL MAKSİMUM DİKEY MEKANİK UZANMA	43.27
MAX. WORKING PRESSURE MAKS. ÇALIŞMA BASINCI	300 Bar
ROTATION ANGLE DÖNÜŞ AÇISI	∞
NUMBER OF THE HYDRAULIC EXTENSION HİDROLİK UZATMA SAYISI	6
NUMBER OF THE HYDRAULIC EXTENSION ON FLY JIB HİDROLİK BOM SAYISI 2. KIRMA	5
COUNTERWEIGHT DENGE AĞIRLIK	2550 kg
PUMP CAPACITY (cc) (lt/min) POMPA KAPASİTESİ (cc) (lt/dk)	DEPEND ON THE PTO ARAÇ PTO ÇIKIŞINA GÖRE
OIL TANK CAPACITY YAĞ TANKI KAPASİTESİ	375 lt
SLEWING RING DIAMETER ÇEMBER DİŞLİ ÇAPI	Ø1380mm - DIŞTAN DİŞLİ / EXTERNAL GEAR
WINCH MAX. SINGLE LINE PULL 4./1. ROPE LAYER HALAT TAMBUR MAK. TEK TEL KAPASİTE 4./1. SARIM	1900 / 2500 kg
BOOM SECTION TYPE BOM KEŞİT YAPISI	1.KIRMA SEKİZGEN / OCTAGONAL 2.KIRMA ALTİGEN / HEXAGONAL
SLEWING GEAR REDÜKTÖR	ÇİFT / DOUBLE
DEAD WEIGHT ÜST YAPI AĞIRLIK	26860 kg

STANDART ÖZELLİKLER STANDARD FEATURES

HALAT TAMBUR
HOSTING WINCH



HAREKETLİ DENGE
AĞIRLIĞI
EXTENDABLE
COUNTERWEIGHT



OPERATÖR KABINI
OPERATOR
CABIN



RADYO KONTROL
RADIO CONTROL



MOMENT KONTROL
SİSTEMİ
MOMENT
CONTROL SYSTEM



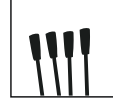
OPERATÖR KABIN
ISITMASI
OPERATOR CABIN
HEATING



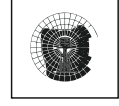
OTOMATİK YAĞLAMA
AUTOMATIC
LUBRICATION



ORANSAL
KUMANDA
PROPORTIONAL
CONTROL VALVE



AYAK KONTROL
SİSTEMİ
STABILIZERS
CONTROL SYSTEM



OPSİYONEL ÖZELLİKLER OPTIONAL FEATURES

ÇİFT KOLDAN
UZATMA
DOUBLE ARM
EXTENSION



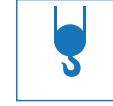
DEĞİŞKEN
DEPLASMANLI POMPA
VARIABLE
DISPLACEMENT
PUMP



OPERATÖR KABIN
KLİMASI
OPERATOR CABIN
A/C



KANTAR
SİSTEMİ
LOAD MEASURING
SYSTEM



JOİSTİK KUMANDA
JOYSTICK
CONTROLLER

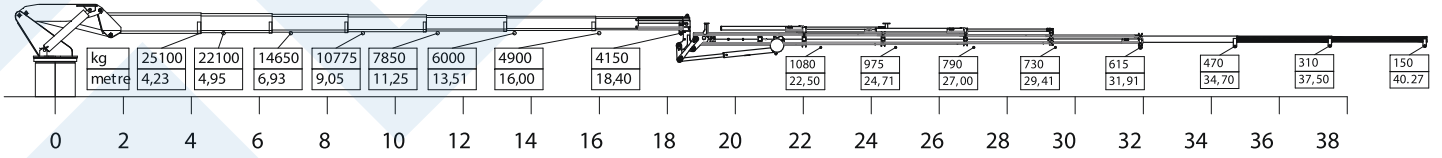
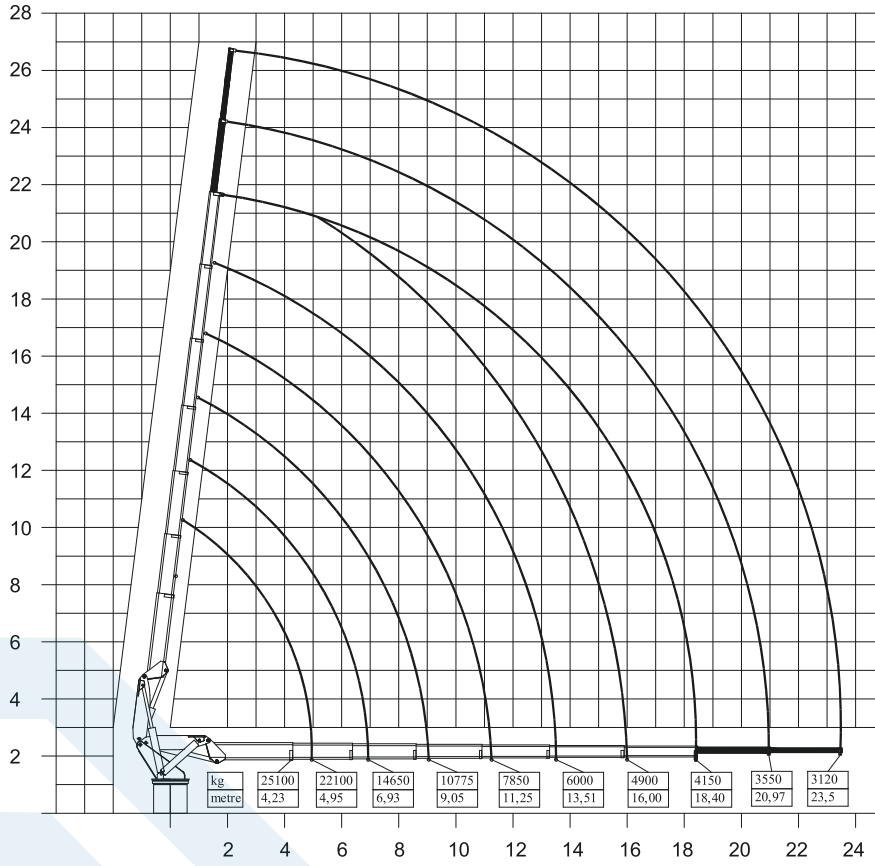




MP 110 EL6+E5 AD

ARAÇ ÜSTÜ KATLANIR BOMLU VİNÇLER TRUCK MOUNTED KNUCKLE BOOM CRANES

MP 110 EL6+E5 AD ÇALIŞMA DİYAGRAMI
MP 110 EL6+E5 AD LIFTING CAPACITY



* UZANMA MESAFELERİNDE BOM SEHİMLERİ DİKKATE ALINMAMIŞTIR.

* **BOOM DEFLECTIONS ARE NOT CONSIDERED AT BOOM DISTANCES.**



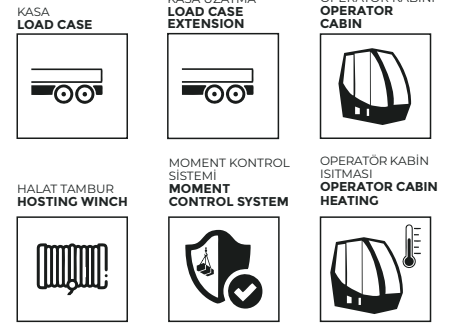
MECPROM



VİNÇ TEKNİK ÖZELLİKLERİ CRANE TECHNICAL SPECIFICATIONS

MAX MOMENT CAPACITY MAKSİMUM MOMENT KAPASİTESİ	110 TM
MAX LIFTING CAPACITY MAKSİMUM YÜK KAPASİTESİ	25100 kg
MAXIMUM VERTICAL HYDRAULIC EXTENSION MAKSİMUM DİKEY HİDROLİK UZANMA	22 m
MAXIMUM VERTICAL MANUAL EXTENSION MAKSİMUM DİKEY MEKANİK UZANMA	26.8 m
MAXIMUM VERTICAL HYDRAULIC EXTENSION WITH FLY JIB 2. KIRMA DAHİL MAKSİMUM DİKEY HİDROLİK UZANMA	37.7
MAXIMUM VERTICAL MANUAL EXTENSION WITH FLY JIB 2. KIRMA DAHİL MAKSİMUM DİKEY MEKANİK UZANMA	43.27
MAX. WORKING PRESSURE MAKS. ÇALIŞMA BASINCI	300 Bar
ROTATION ANGLE DÖNÜŞ AÇISI	∞
NUMBER OF THE HYDRAULIC EXTENSION HİDROLİK UZATMA SAYISI	6
NUMBER OF THE HYDRAULIC EXTENSION ON FLY JIB HİDROLİK BOM SAYISI 2. KIRMA	5
COUNTERWEIGHT DENGE AĞIRLIK	*
PUMP CAPACITY (cc) (lt/min) POMPA KAPASİTESİ (cc) (lt/dk)	DEPEND ON THE PTO ARAÇ PTO ÇIKIŞINA GÖRE
OIL TANK CAPACITY YAĞ TANKI KAPASİTESİ	375 lt
SLEWING RING DIAMETER ÇEMBER DİŞLİ ÇAPI	Ø1380mm - DIŞTAN DİŞLİ / EXTERNAL GEAR
WINCH MAX. SINGLE LINE PULL 4./1. ROPE LAYER HALAT TAMBUR MAK. TEK TEL KAPASİTE 4./1. SARIM	1900 / 2500 kg
BOOM SECTION TYPE BOM KESİT YAPISI	1.KIRMA SEKİZGEN / OCTAGONAL 2.KIRMA ALTİGEN / HEXAGONAL
SLEWING GEAR REDÜKTÖR	ÇİFT / DOUBLE
DEAD WEIGHT ÜST YAPI AĞIRLIK	22210 kg

STANDART ÖZELLİKLER STANDARD FEATURES



OPSİYONEL ÖZELLİKLER OPTIONAL FEATURES

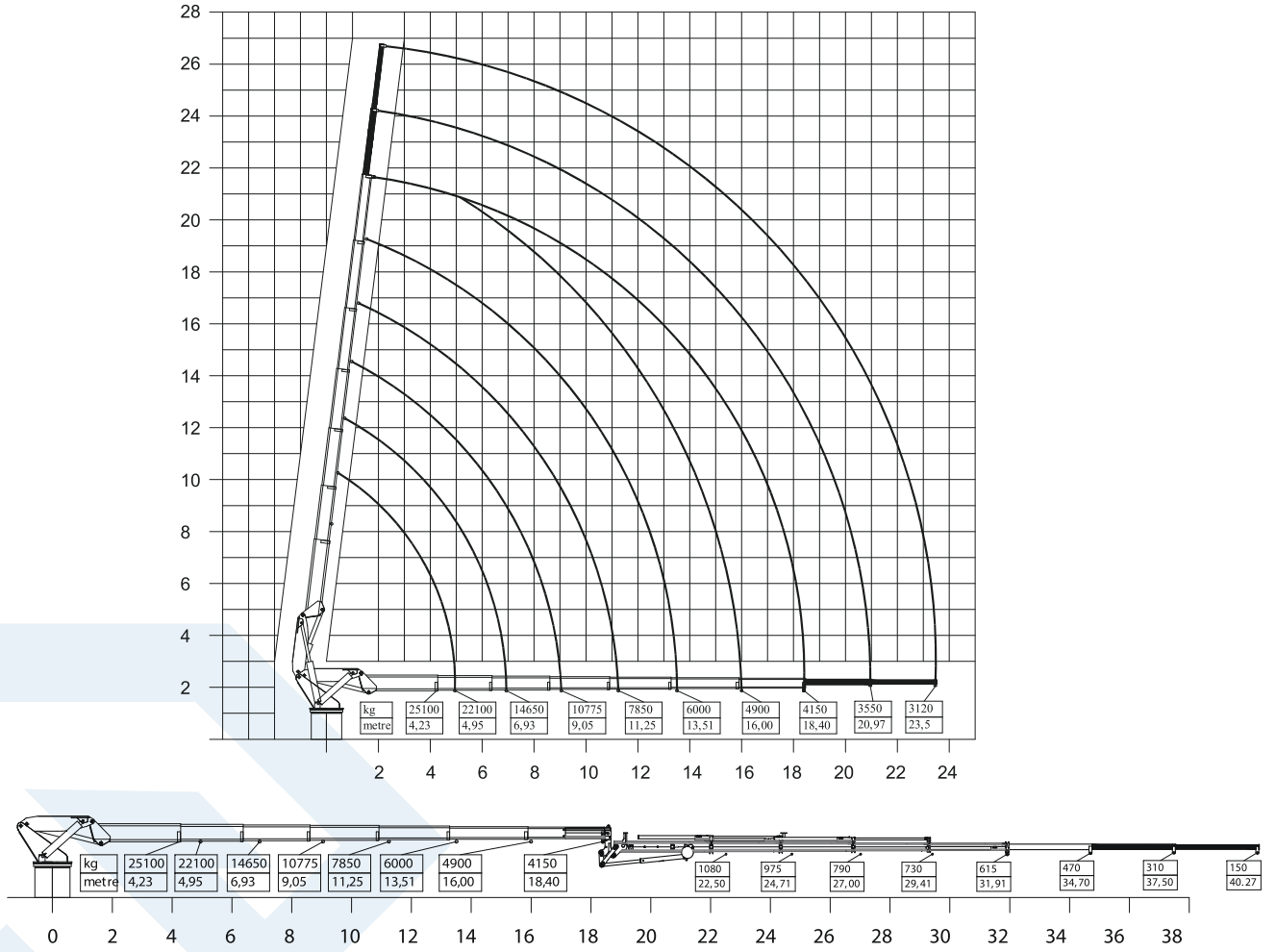




MP 110 EL6+E5

ARAÇ ÜSTÜ KATLANIR BOMLU VİNÇLER TRUCK MOUNTED KNUCKLE BOOM CRANES

MP 110 EL6+E5 ÇALIŞMA DİYAGRAMI MP 110 EL6+E5 LIFTING CAPACITY



* UZANMA MESAFELERİNDE BOM SEHİMLERİ DIKKATE ALINMAMIŞTIR.

* BOOM DEFLECTIONS ARE NOT CONSIDERED AT BOOM DISTANCES.



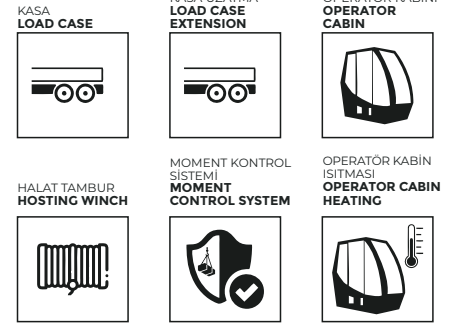
MECPROM



VİNÇ TEKNİK ÖZELLİKLERİ CRANE TECHNICAL SPECIFICATIONS

MAX MOMENT CAPACITY MAKSİMUM MOMENT KAPASİTESİ	95 TM
MAX LIFTING CAPACITY MAKSİMUM YÜK KAPASİTESİ	22300 kg
MAXIMUM VERTICAL HYDRAULIC EXTENSION MAKSİMUM DİKEY HİDROLİK UZANMA	20 m
MAXIMUM VERTICAL MANUAL EXTENSION MAKSİMUM DİKEY MEKANİK UZANMA	25 m
MAXIMUM VERTICAL HYDRAULIC EXTENSION WITH FLY JIB 2. KIRMA DAHİL MAKSİMUM DİKEY HİDROLİK UZANMA	32.8
MAXIMUM VERTICAL MANUAL EXTENSION WITH FLY JIB 2. KIRMA DAHİL MAKSİMUM DİKEY MEKANİK UZANMA	38.2
MAX. WORKING PRESSURE MAKS. ÇALIŞMA BASINCI	300 Bar
ROTATION ANGLE DÖNÜŞ AÇISI	∞
NUMBER OF THE HYDRAULIC EXTENSION HİDROLİK UZATMA SAYISI	6
NUMBER OF THE HYDRAULIC EXTENSION ON FLY JIB HİDROLİK BOM SAYISI 2. KIRMA	4
COUNTERWEIGHT DENGE AĞIRLIK	*
PUMP CAPACITY (cc) (lt/min) POMPA KAPASİTESİ (cc) (lt/dk)	DEPEND ON THE PTO ARAÇ PTO ÇIKIŞINA GÖRE
OIL TANK CAPACITY YAĞ TANKI KAPASİTESİ	375 lt
SLEWING RING DIAMETER ÇEMBER DİŞLİ ÇAP	Ø1289mm - DIŞTAN DİŞLİ / EXTERNAL GEAR
WINCH MAX. SINGLE LINE PULL 4./1. ROPE LAYER HALAT TAMBUR MAK. TEK TEL KAPASİTE 4./1. SARIM	1900 / 2500 kg
BOOM SECTION TYPE BOM KEŞİT YAPISI	SEKİZGEN / OCTAGONAL
SLEWING GEAR REDÜKTÖR	ÇİFT / DOUBLE
DEAD WEIGHT ÜST YAPI AĞIRLIK	19900 kg

STANDART ÖZELLİKLER STANDARD FEATURES



OPSİYONEL ÖZELLİKLER OPTIONAL FEATURES

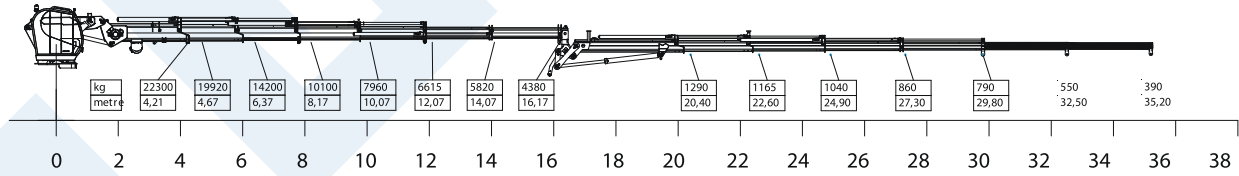
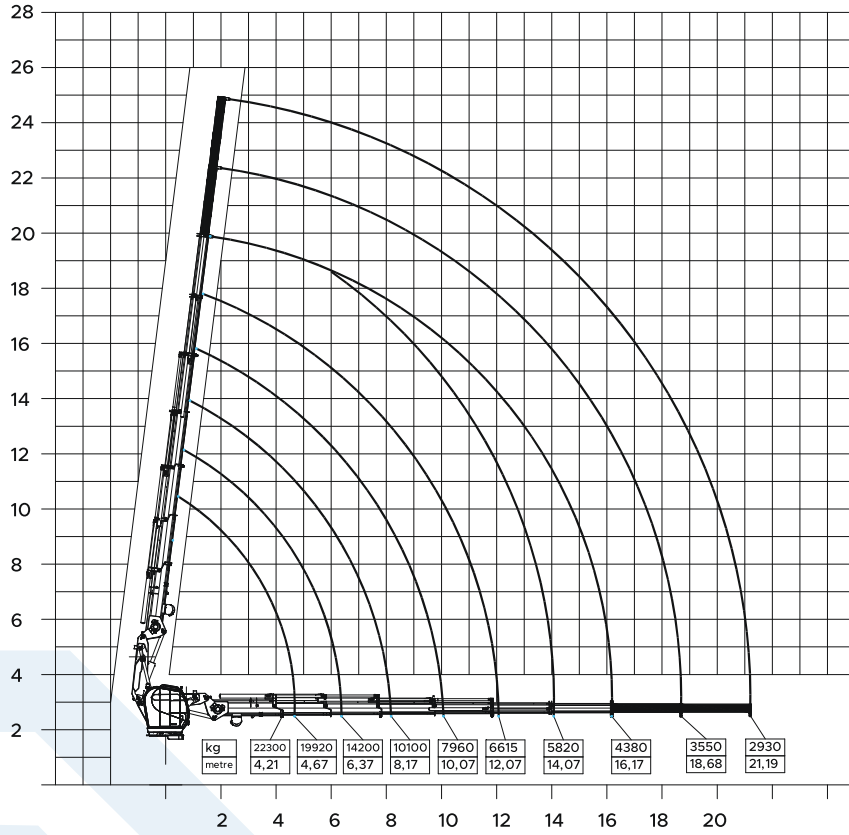




MP 95 ES6+E4

ARAÇ ÜSTÜ KATLANIR BOMLU VİNÇLER TRUCK MOUNTED KNUCKLE BOOM CRANES

MP 95 ES6+E4 ÇALIŞMA DİYAGRAMI MP95 ES6+E4 LIFTING CAPACITY



* UZANMA MESAFELERİNDE BOM SEHİMLERİ DİKKATE ALINMAMIŞTIR.
* BOOM DEFLECTIONS ARE NOT CONSIDERED AT BOOM DISTANCES.



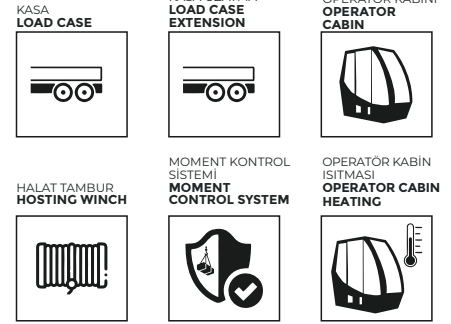
MECPROM



VİNÇ TEKNİK ÖZELLİKLERİ CRANE TECHNICAL SPECIFICATIONS

MAX MOMENT CAPACITY MAKSİMUM MOMENT KAPASİTESİ	75 TM
MAX LIFTING CAPACITY MAKSİMUM YÜK KAPASİTESİ	20100 kg
MAXIMUM VERTICAL HYDRAULIC EXTENSION MAKSİMUM DİKEY HİDROLİK UZANMA	18 m
MAXIMUM VERTICAL MANUAL EXTENSION MAKSİMUM DİKEY MEKANİK UZANMA	22 m
MAXIMUM VERTICAL HYDRAULIC EXTENSION WITH FLY JIB 2. KIRMA DAHİL MAKSİMUM DİKEY HİDROLİK UZANMA	*
MAXIMUM VERTICAL MANUAL EXTENSION WITH FLY JIB 2. KIRMA DAHİL MAKSİMUM DİKEY MEKANİK UZANMA	*
MAX. WORKING PRESSURE MAKS. ÇALIŞMA BASINCI	300 Bar
ROTATION ANGLE DÖNÜŞ AÇISI	∞
NUMBER OF THE HYDRAULIC EXTENSION HİDROLİK UZATMA SAYISI	6
NUMBER OF THE HYDRAULIC EXTENSION ON FLY JIB HİDROLİK BOM SAYISI 2. KIRMA	*
COUNTERWEIGHT DENGE AĞIRLIK	*
PUMP CAPACITY (cc) (lt/min) POMPA KAPASİTESİ (cc) (lt/dk)	DEPEND ON THE PTO ARAÇ PTO ÇIKIŞINA GÖRE
OIL TANK CAPACITY YAĞ TANKI KAPASİTESİ	350 lt
SLEWING RING DIAMETER ÇEMBER DİŞLİ ÇAPI	Ø1289mm - DIŞTAN DİŞLİ / EXTERNAL GEAR
WINCH MAX. SINGLE LINE PULL 4./1. ROPE LAYER HALAT TAMBUR MAK. TEK TEL KAPASİTE 4./1. SARIM	1900 / 2500 kg
BOOM SECTION TYPE BOM KESİT YAPISI	SEKİZGEN / OCTAGONAL
SLEWING GEAR REDÜKTÖR	TEK / SINGLE
DEAD WEIGHT ÜST YAPI AĞIRLIK	13500 kg

STANDART ÖZELLİKLER STANDARD FEATURES



OPSİYONEL ÖZELLİKLER OPTIONAL FEATURES

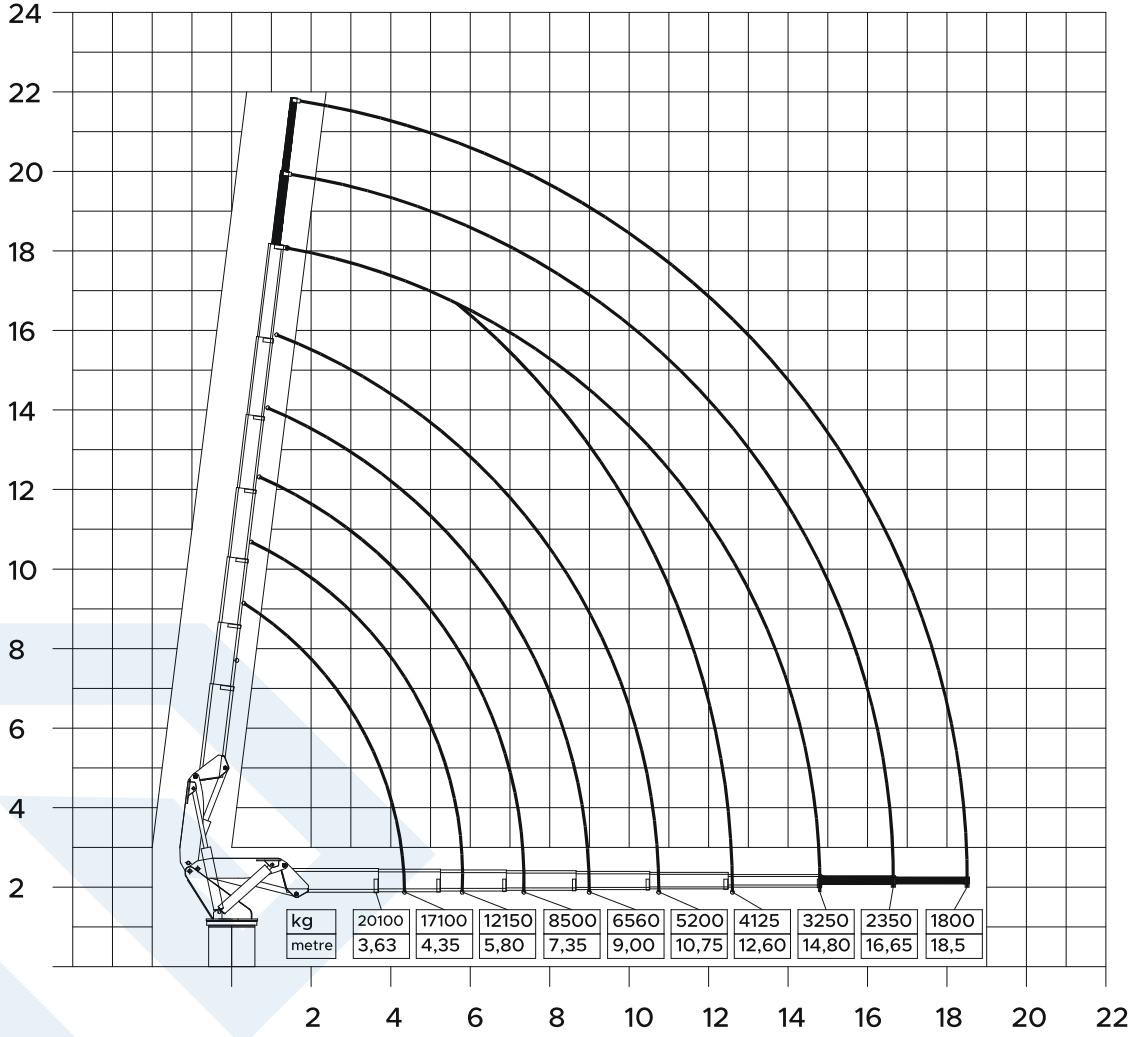




MP75 ES6

ARAÇ ÜSTÜ KATLANIR BOMLU VİNÇLER TRUCK MOUNTED KNUCKLE BOOM CRANES

MP 75 ES6 ÇALIŞMA DİYAGRAMI MP 75 ES6 LIFTING CAPACITY



* UZANMA MESAFELERİNDE BOM SEHİMLERİ DİKKATE ALINMAMIŞTIR.

* BOOM DEFLECTIONS ARE NOT CONSIDERED AT BOOM DISTANCES.

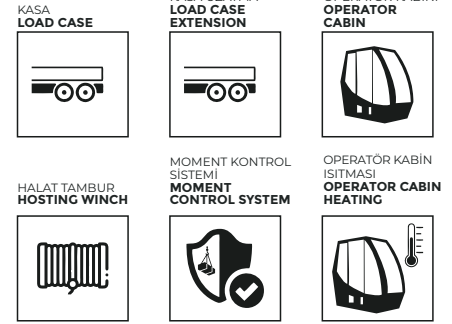




VİNÇ TEKNİK ÖZELLİKLERİ CRANE TECHNICAL SPECIFICATIONS

MAX MOMENT CAPACITY MAKSİMUM MOMENT KAPASİTESİ	60 TM
MAX LIFTING CAPACITY MAKSİMUM YÜK KAPASİTESİ	16500 kg
MAXIMUM VERTICAL HYDRAULIC EXTENSION MAKSİMUM DİKEY HİDROLİK UZANMA	18 m
MAXIMUM VERTICAL MANUAL EXTENSION MAKSİMUM DİKEY MEKANİK UZANMA	22 m
MAXIMUM VERTICAL HYDRAULIC EXTENSION WITH FLY JIB 2. KIRMA DAHİL MAKSİMUM DİKEY HİDROLİK UZANMA	*
MAXIMUM VERTICAL MANUAL EXTENSION WITH FLY JIB 2. KIRMA DAHİL MAKSİMUM DİKEY MEKANİK UZANMA	*
MAX. WORKING PRESSURE MAKS. ÇALIŞMA BASINCI	300 Bar
ROTATION ANGLE DÖNÜŞ AÇISI	∞
NUMBER OF THE HYDRAULIC EXTENSION HİDROLİK UZATMA SAYISI	6
NUMBER OF THE HYDRAULIC EXTENSION ON FLY JIB HİDROLİK BOM SAYISI 2. KIRMA	*
COUNTERWEIGHT DENGE AĞIRLIK	*
PUMP CAPACITY (cc) (lt/min) POMPA KAPASİTESİ (cc) (lt/dk)	DEPEND ON THE PTO ARAÇ PTO ÇIKIŞINA GÖRE
OIL TANK CAPACITY YAĞ TANKI KAPASİTESİ	350 lt
SLEWING RING DIAMETER ÇEMBER DİŞLİ ÇAPI	Ø1144mm - DIŞTAN DİŞLİ / EXTERNAL GEAR
WINCH MAX. SINGLE LINE PULL 4./1. ROPE LAYER HALAT TAMBUR MAK. TEK TEL KAPASİTE 4./1. SARIM	1900 / 2500 kg
BOOM SECTION TYPE BOM KEŞİT YAPISI	SEKİZGEN / OCTAGONAL
SLEWING GEAR REDÜKTÖR	TEK / SINGLE
DEAD WEIGHT ÜST YAPI AĞIRLIK	12500 kg

STANDART ÖZELLİKLER STANDARD FEATURES



OPSİYONEL ÖZELLİKLER OPTIONAL FEATURES

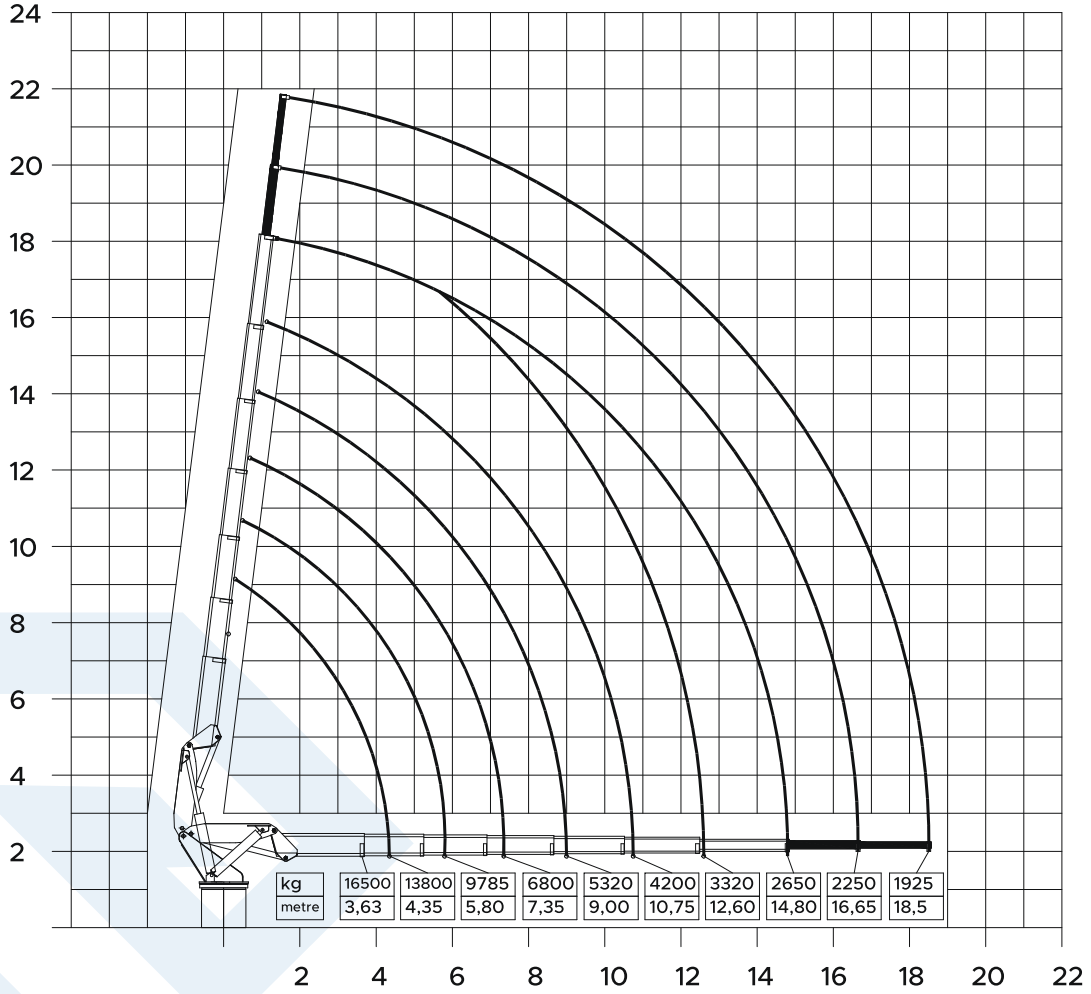




MP60 ES6

ARAÇ ÜSTÜ KATLANIR BOMLU VİNÇLER TRUCK MOUNTED KNUCKLE BOOM CRANES

MP 60 ES6 ÇALIŞMA DİYAGRAMI MP 60 ES6 LIFTING CAPACITY



* UZANMA MESAFELERİNDE BOM SEHİMLERİ DİKKATE ALINMAMIŞTIR.
* BOOM DEFLECTIONS ARE NOT CONSIDERED AT BOOM DISTANCES.



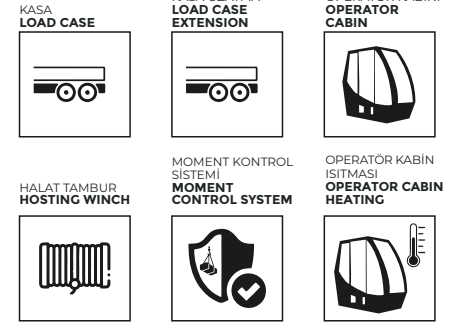
MECPROM



VİNÇ TEKNİK ÖZELLİKLERİ CRANE TECHNICAL SPECIFICATIONS

MAX MOMENT CAPACITY MAKSİMUM MOMENT KAPASİTESİ	45 TM
MAX LIFTING CAPACITY MAKSİMUM YÜK KAPASİTESİ	9150 kg
MAXIMUM VERTICAL HYDRAULIC EXTENSION MAKSİMUM DİKEY HİDROLİK UZANMA	17.95 m
MAXIMUM VERTICAL MANUAL EXTENSION MAKSİMUM DİKEY MEKANİK UZANMA	22 m
MAXIMUM VERTICAL HYDRAULIC EXTENSION WITH FLY JIB 2. KIRMA DAHİL MAKSİMUM DİKEY HİDROLİK UZANMA	*
MAXIMUM VERTICAL MANUAL EXTENSION WITH FLY JIB 2. KIRMA DAHİL MAKSİMUM DİKEY MEKANİK UZANMA	*
MAX. WORKING PRESSURE MAKS. ÇALIŞMA BASINCI	300 Bar
ROTATION ANGLE DÖNÜŞ AÇISI	∞
NUMBER OF THE HYDRAULIC EXTENSION HİDROLİK UZATMA SAYISI	6
NUMBER OF THE HYDRAULIC EXTENSION ON FLY JIB HİDROLİK BOM SAYISI 2. KIRMA	*
COUNTERWEIGHT DENGE AĞIRLIK	*
PUMP CAPACITY (cc) (lt/min) POMPA KAPASİTESİ (cc) (lt/dk)	DEPEND ON THE PTO ARAÇ PTO ÇIKIŞINA GÖRE
OIL TANK CAPACITY YAĞ TANKI KAPASİTESİ	300 lt
SLEWING RING DIAMETER ÇEMBER DİŞLİ ÇAPI	Ø1144mm - DIŞTAN DİŞLİ / EXTERNAL GEAR
WINCH MAX. SINGLE LINE PULL 4./1. ROPE LAYER HALAT TAMBUR MAK. TEK TEL KAPASİTE 4./1. SARIM	1170 / 1500 kg
BOOM SECTION TYPE BOM KEŞİT YAPISI	ALTIGEN / HEXAGON
SLEWING GEAR REDÜKTÖR	TEK / SINGLE
DEAD WEIGHT ÜST YAPI AĞIRLIK	11000 kg

STANDART ÖZELLİKLER STANDARD FEATURES



OPSİYONEL ÖZELLİKLER OPTIONAL FEATURES

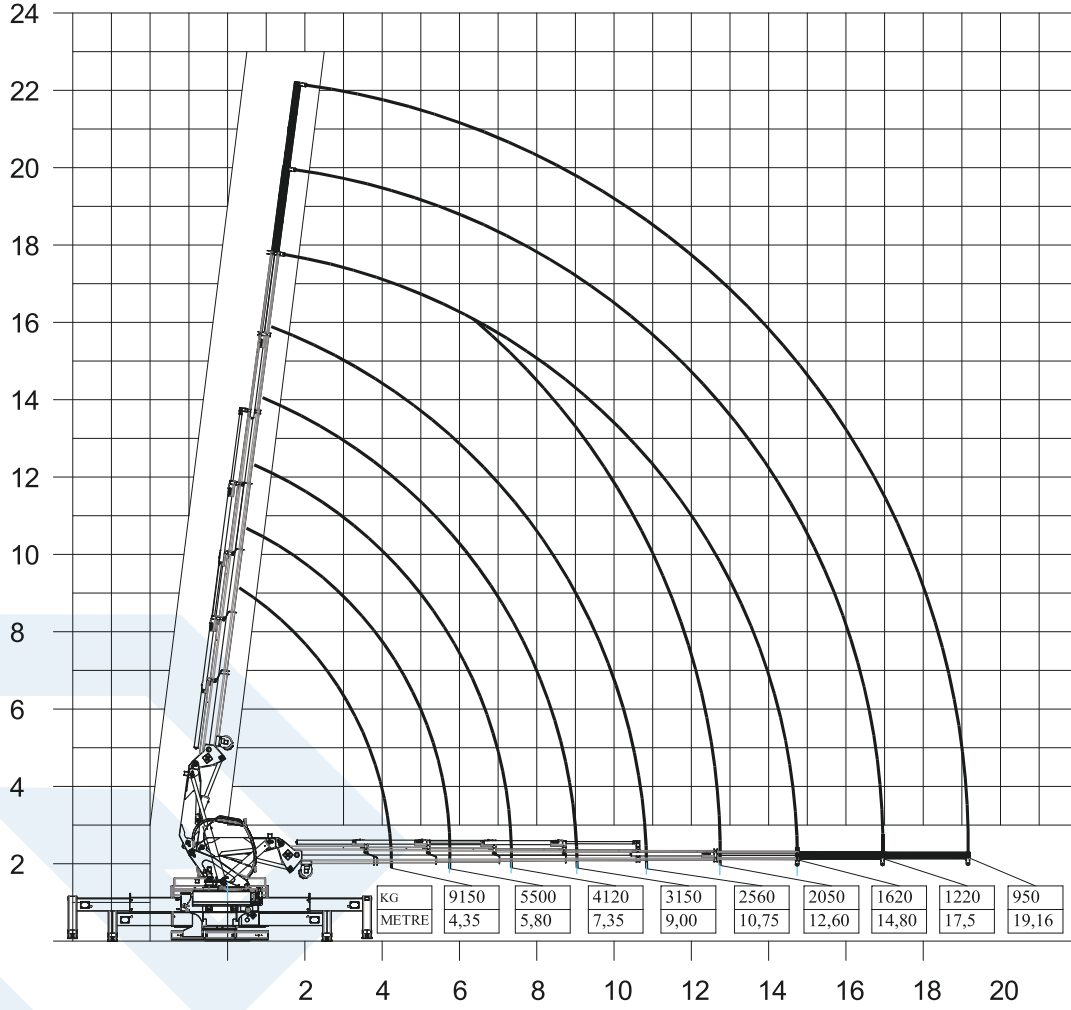




MP45 ES6

ARAÇ ÜSTÜ KATLANIR BOMLU VİNÇLER TRUCK MOUNTED KNUCKLE BOOM CRANES

MP 45 ES6 ÇALIŞMA DİYAGRAMI MP 45 ES6 LIFTING CAPACITY



* UZANMA MESAFELERİNDE BOM SEHİMLERİ DİKKATE ALINMAMIŞTIR.

* **BOOM DEFLECTIONS ARE NOT CONSIDERED AT BOOM DISTANCES.**



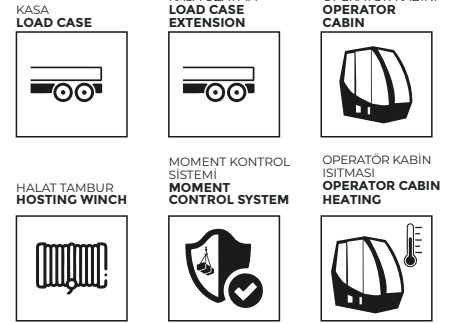
MECPROM



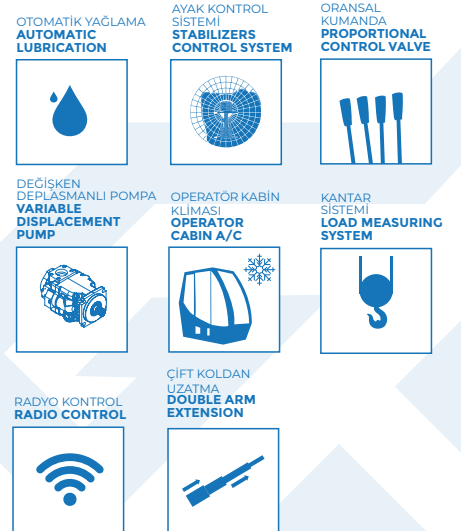
VİNÇ TEKNİK ÖZELLİKLERİ CRANE TECHNICAL SPECIFICATIONS

MAX MOMENT CAPACITY MAKSİMUM MOMENT KAPASİTESİ	30 TM
MAX LIFTING CAPACITY MAKSİMUM YÜK KAPASİTESİ	6550 kg
MAXIMUM VERTICAL HYDRAULIC EXTENSION MAKSİMUM DİKEY HİDROLİK UZANMA	16.8 m
MAXIMUM VERTICAL MANUAL EXTENSION MAKSİMUM DİKEY MEKANİK UZANMA	21.4 m
MAXIMUM VERTICAL HYDRAULIC EXTENSION WITH FLY JIB 2. KIRMA DAHİL MAKSİMUM DİKEY HİDROLİK UZANMA	*
MAXIMUM VERTICAL MANUAL EXTENSION WITH FLY JIB 2. KIRMA DAHİL MAKSİMUM DİKEY MEKANİK UZANMA	*
MAX. WORKING PRESSURE MAKS. ÇALIŞMA BASINCI	300 Bar
ROTATION ANGLE DÖNÜŞ AÇISI	∞
NUMBER OF THE HYDRAULIC EXTENSION HİDROLİK UZATMA SAYISI	6
NUMBER OF THE HYDRAULIC EXTENSION ON FLY JIB HİDROLİK BOM SAYISI 2. KIRMA	*
COUNTERWEIGHT DENGE AĞIRLIK	*
PUMP CAPACITY (cc) (lt/min) POMPA KAPASİTESİ (cc) (lt/dk)	DEPEND ON THE PTO ARAÇ PTO ÇIKIŞINA GÖRE
OIL TANK CAPACITY YAĞ TANKI KAPASİTESİ	240 lt
SLEWING RING DIAMETER ÇEMBER DİŞLİ ÇAPI	ø980mm - DIŞTAN DİŞLİ / EXTERNAL GEAR
WINCH MAX. SINGLE LINE PULL 4./1. ROPE LAYER HALAT TAMBUR MAK. TEK TEL KAPASİTE 4./1. SARIM	1170 / 1500 kg
BOOM SECTION TYPE BOM KESİT YAPISI	ALTIGEN / HEXAGON
SLEWING GEAR REDÜKTÖR	TEK / SINGLE
DEAD WEIGHT ÜST YAPI AĞIRLIK	9750 kg

STANDART ÖZELLİKLER STANDARD FEATURES



OPSİYONEL ÖZELLİKLER OPTIONAL FEATURES

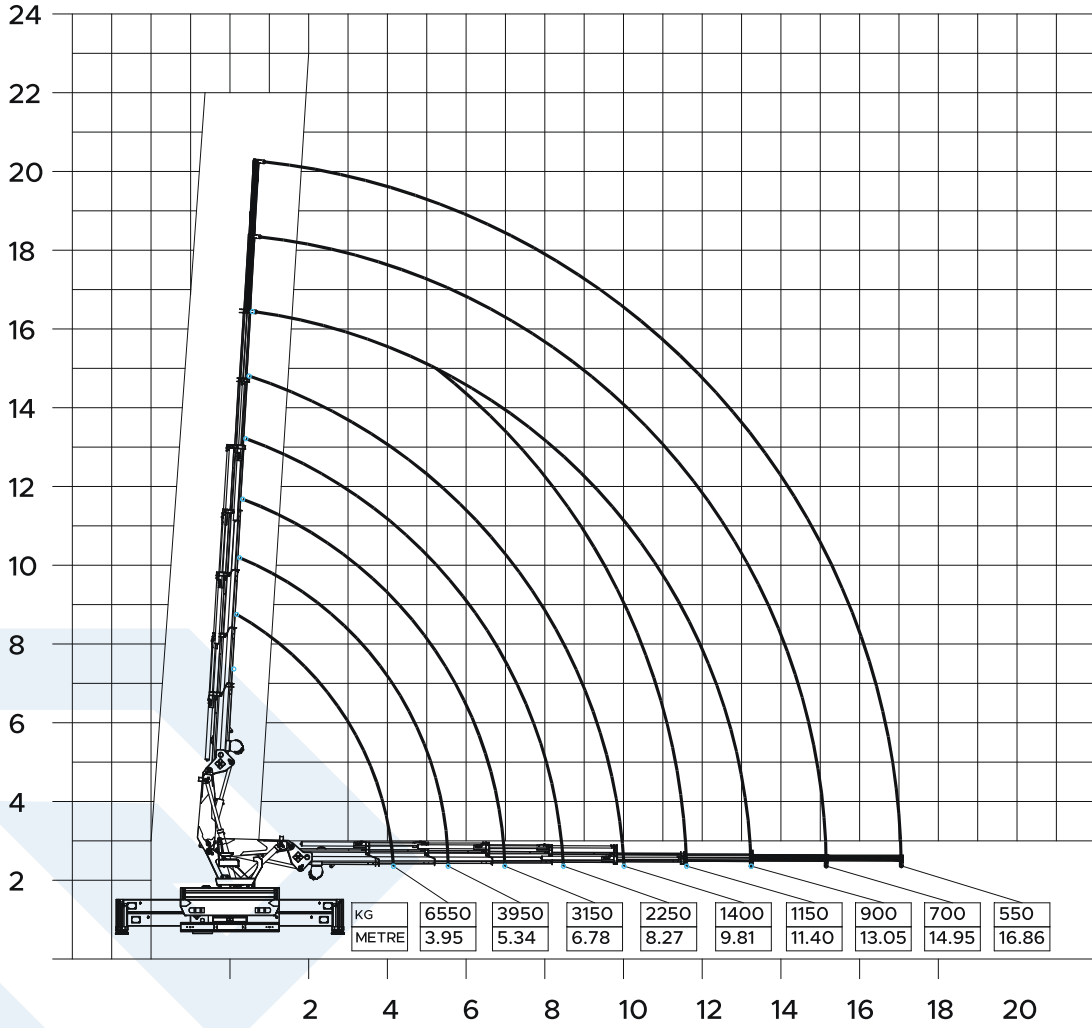




MP30 ES6

ARAÇ ÜSTÜ KATLANIR BOMLU VİNÇLER TRUCK MOUNTED KNUCKLE BOOM CRANES

MP 30 ES6 ÇALIŞMA DİYAGRAMI MP 30 ES6 LIFTING CAPACITY



* UZANMA MESAFELERİNDE BOM SEHİMLERİ DİKKATE ALINMAMIŞTIR.

* BOOM DEFLECTIONS ARE NOT CONSIDERED AT BOOM DISTANCES.



MECPROM

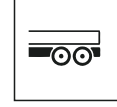


VİNÇ TEKNİK ÖZELLİKLERİ CRANE TECHNICAL SPECIFICATIONS

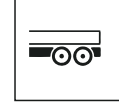
MAX MOMENT CAPACITY MAKSİMUM MOMENT KAPASİTESİ	24 TM
MAX LIFTING CAPACITY MAKSİMUM YÜK KAPASİTESİ	4052 kg
MAXIMUM VERTICAL HYDRAULIC EXTENSION MAKSİMUM DİKEY HİDROLİK UZANMA	14.8 m
MAXIMUM VERTICAL MANUAL EXTENSION MAKSİMUM DİKEY MEKANİK UZANMA	19 m
MAXIMUM VERTICAL HYDRAULIC EXTENSION WITH FLY JIB 2. KIRMA DAHİL MAKSİMUM DİKEY HİDROLİK UZANMA	*
MAXIMUM VERTICAL MANUAL EXTENSION WITH FLY JIB 2. KIRMA DAHİL MAKSİMUM DİKEY MEKANİK UZANMA	*
MAX. WORKING PRESSURE MAKS. ÇALIŞMA BASINCI	300 Bar
ROTATION ANGLE DÖNÜŞ AÇISI	400°
NUMBER OF THE HYDRAULIC EXTENSION HİDROLİK UZATMA SAYISI	3
NUMBER OF THE HYDRAULIC EXTENSION ON FLY JIB HİDROLİK BOM SAYISI 2. KIRMA	*
COUNTERWEIGHT DENGE AĞIRLIK	*
PUMP CAPACITY (cc) (lt/min) POMPA KAPASİTESİ (cc) (lt/dk)	ARAÇ PTO ÇIKIŞINA GÖRE DEPEND ON THE PTO
OIL TANK CAPACITY YAĞ TANKI KAPASİTESİ	220 lt
SLEWING RING DIAMETER ÇEMBER DIŞLI ÇAP	KREMAYER
WINCH MAX. SINGLE LINE PULL 4./1. ROPE LAYER HALAT TAMBUR MAK. TEK TEL KAPASİTE 4./1. SARIM	1170 / 1500 kg
BOOM SECTION TYPE BOM KESİT YAPISI	ALTİGEN / HEXAGONAL
SLEWING GEAR REDÜKTÖR	RACK AND PINION KREMAYER
DEAD WEIGHT ÜST YAPI AĞIRLIK	2800 kg (arka denge ayak ve ilave şase hariç)

STANDART ÖZELLİKLER STANDARD FEATURES

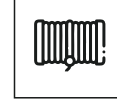
KASA
LOAD CASE



KASA UZATMA
LOAD CASE
EXTENSION



HALAT TAMBUR
ROPE DRUM



MOMENT KONTROL
SİSTEMİ
MOMENT CONTROL
SYSTEM



OPSİYONEL ÖZELLİKLER OPTIONAL FEATURES

OTOMATİK
YAĞLAMA
AUTOMATIC
LUBRICATION



AYAK KONTROL
SİSTEMİ
STABILIZERS
CONTROL SYSTEM



DEĞİŞKEN
DEPLASMANLI POMPA
VARIABLE
DISPLACEMENT PUMP



ORANSAL
KUMANDA
PROPORTIONAL
CONTROL VALVE



KANTAR SİSTEMİ
LOAD MEASURING
SYSTEM



RADYO KONTROL
RADIO CONTROL

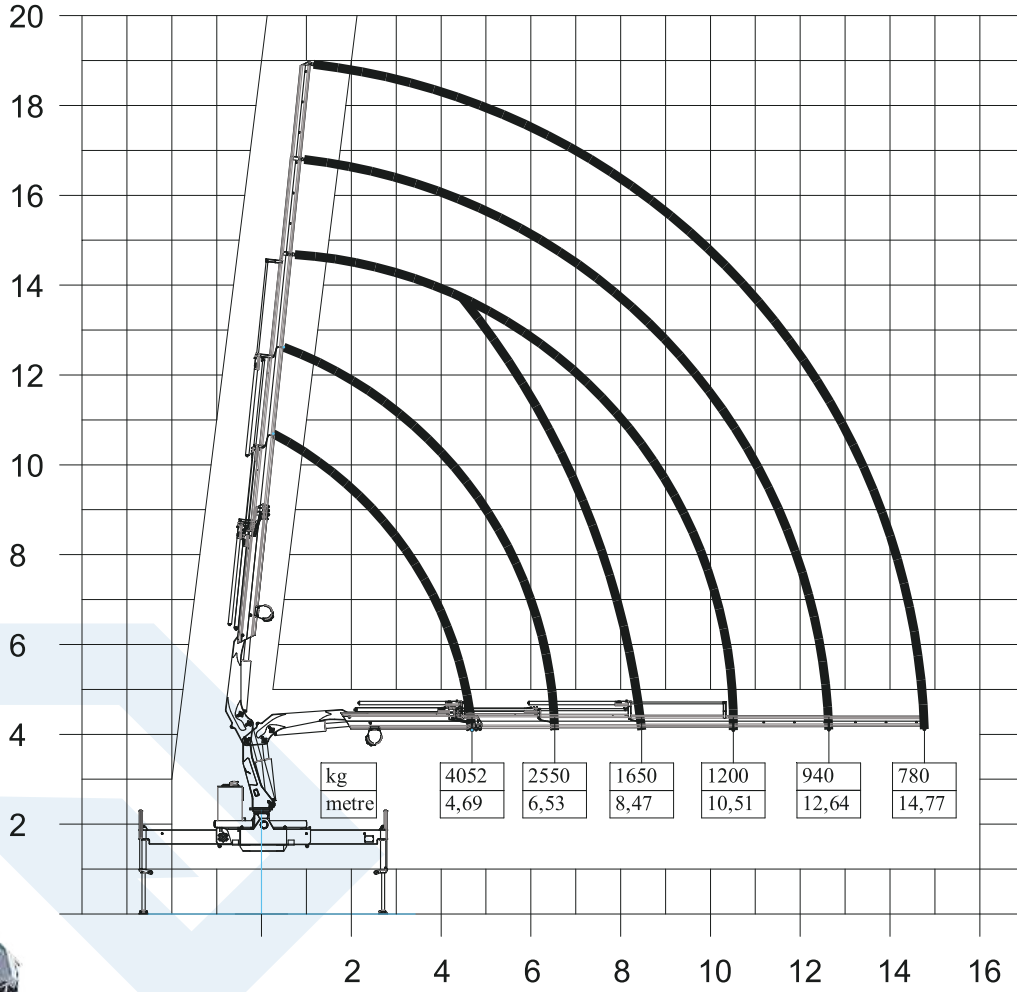




MP24 FS3

ARAÇ ÜSTÜ KATLANIR BOMLU VİNÇLER TRUCK MOUNTED KNUCKLE BOOM CRANES

MP 24 FS3 ÇALIŞMA DİYAGRAMI MP 24 FS3 LIFTING CAPACITY



* UZANMA MESAFELERİNDE BOM SEHİMLERİ DİKKATE ALINMAMIŞTIR.

* BOOM DEFLECTIONS ARE NOT CONSIDERED AT BOOM DISTANCES.



MECPROM



CHOICE FOR STRENGTH



MECPROM

ADDRESS OF QUALITY



Merkez Fabrika
Büyükkayacık OSB Mh.
4.Organize Sanayi Bölgesi
414 Nolu Sk. No:1/1
Selçuklu / Konya



Şube
Büyükkayacık OSB Mh.
2.Organize Sanayi Bölgesi
Lalehan Cd. No:19
Selçuklu / Konya



www.mecprom.com



satis@mecprom.com / export@mecprom.com



/ mecprom



+90 332 501 51 19